



Why College Matters

**A Graphical Compendium of Educational
Attainment Differentials in U.S. Labor Market Success**

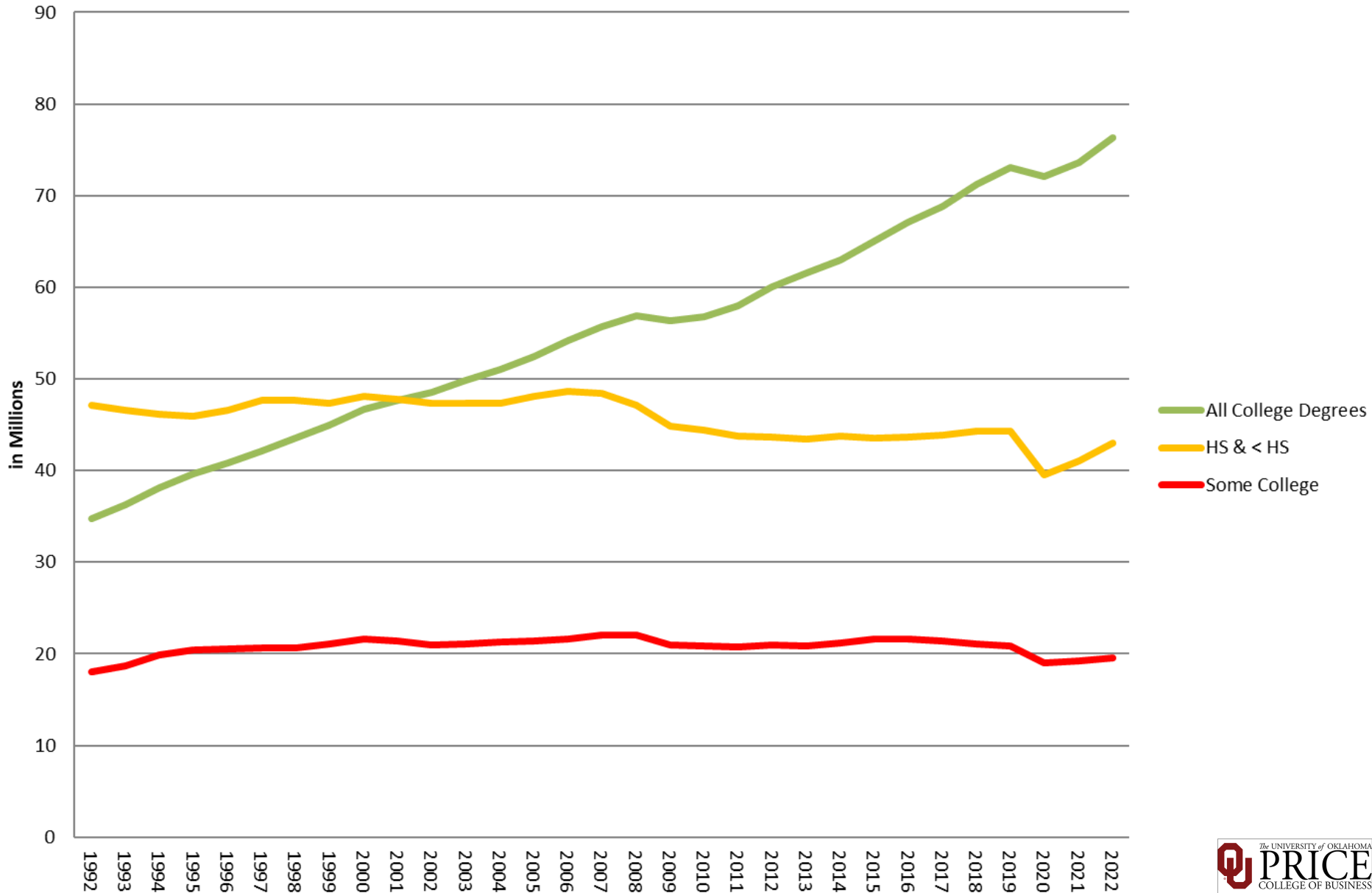
Robert C. Dauffenbach

Professor Emeritus

Price College of Business, University of Oklahoma

September 2022

U.S. Employment Trends by Major Group Educational Attainment: 25+ Years of Age, 1992 - 2022



U.S. Employment Change by Major-Group Educational Attainment: 25+ Years of Age, from 1992 to 2022

Millions

50

40

30

20

10

0

-10

High School Grad or Less

-4.2

1.5

Some College

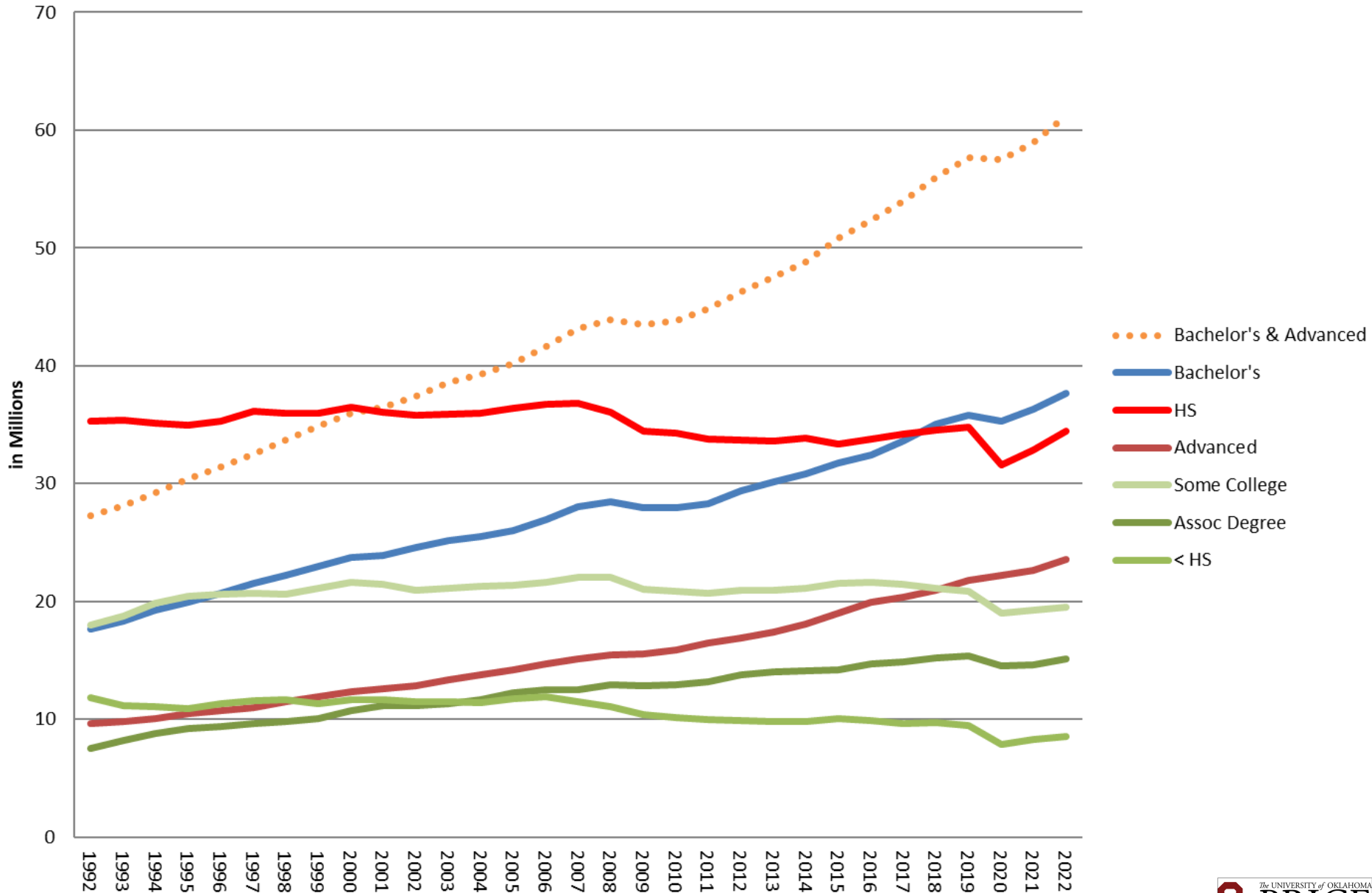
41.5

Assoc., Bach., and Advanced

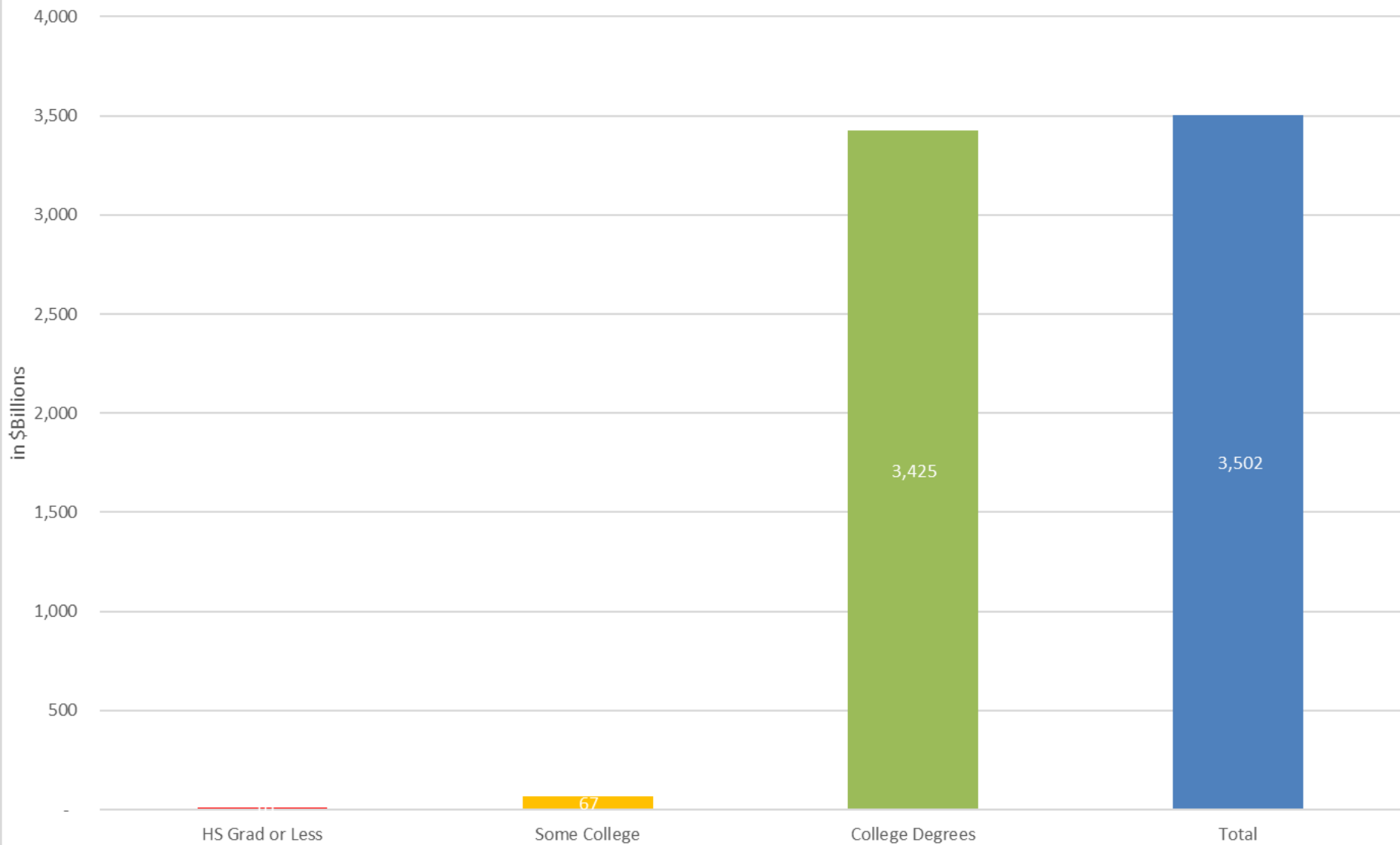
38.9

Total Change

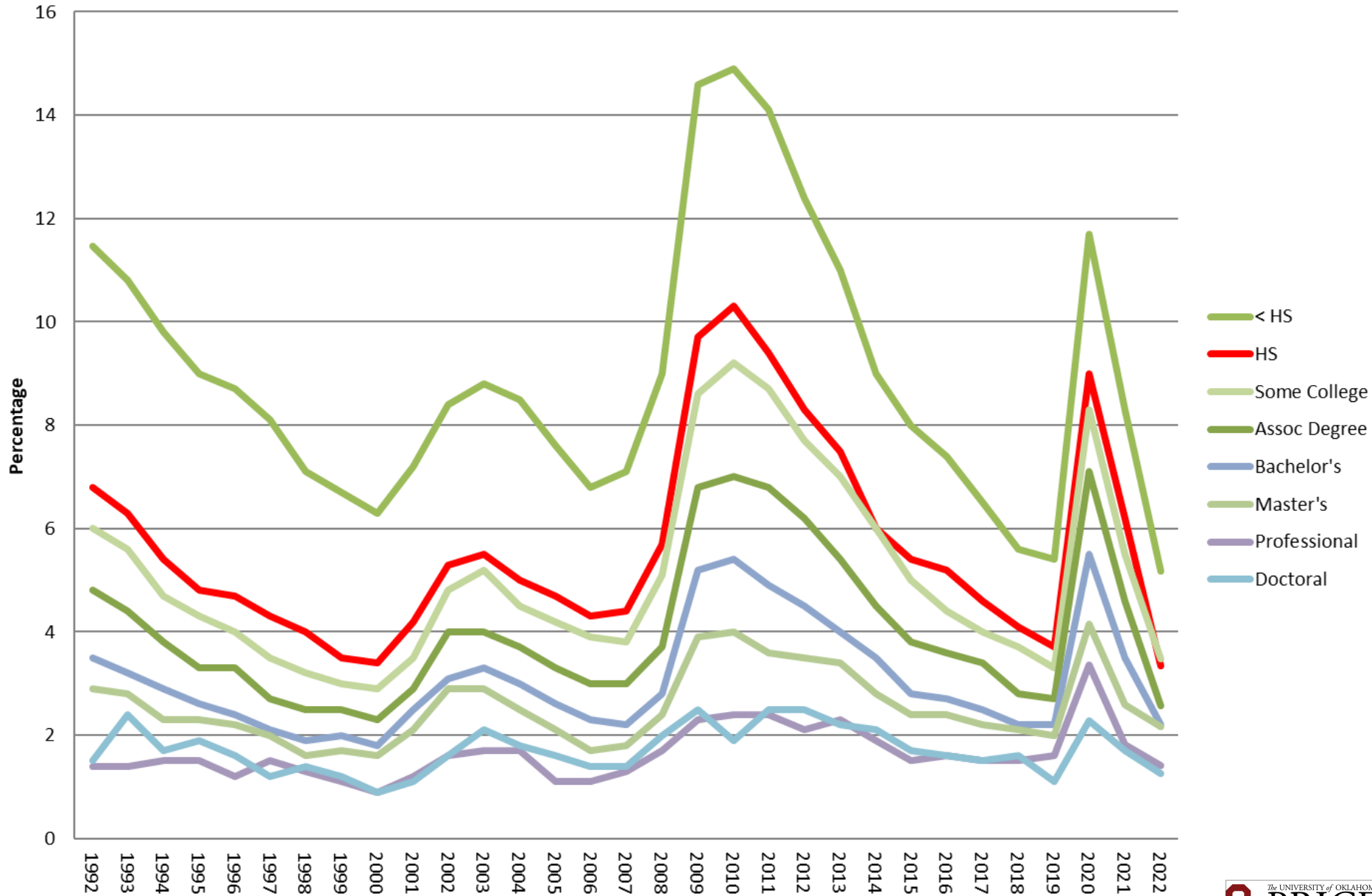
Employment Trends by Detailed Educational Attainment: 25+ Years of Age, 1992 - 2022



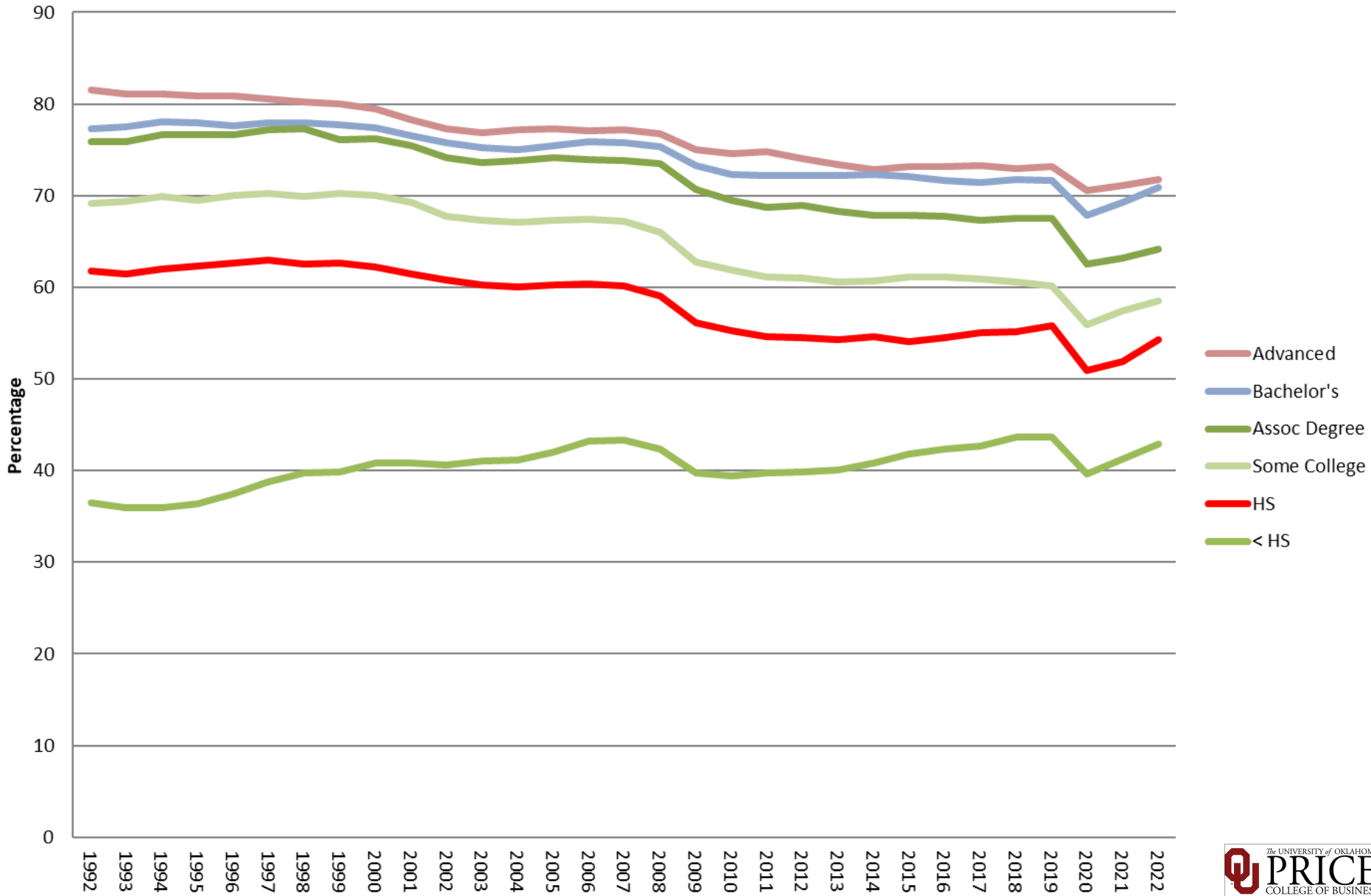
Real Earnings Change by Major-Group Educational Attainment: 18+ Years of Age, from 1994 to 2020



Unemployment Rates by Detailed Educational Attainment: 25+ Year Olds, 1992-2022

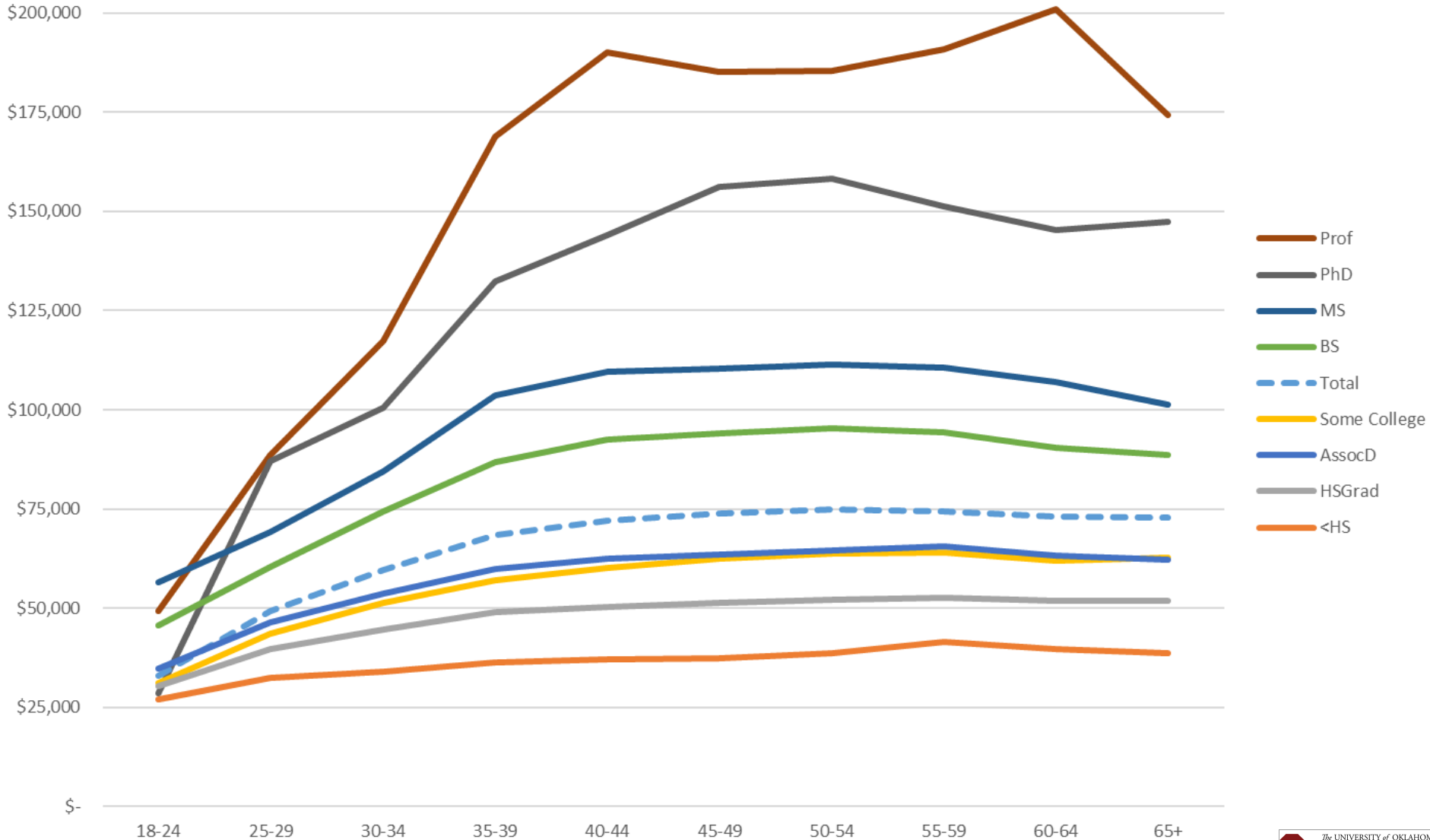


Employment-to-Population Rates by Educational Attainment: 25+ Years of Age, 1992-2022



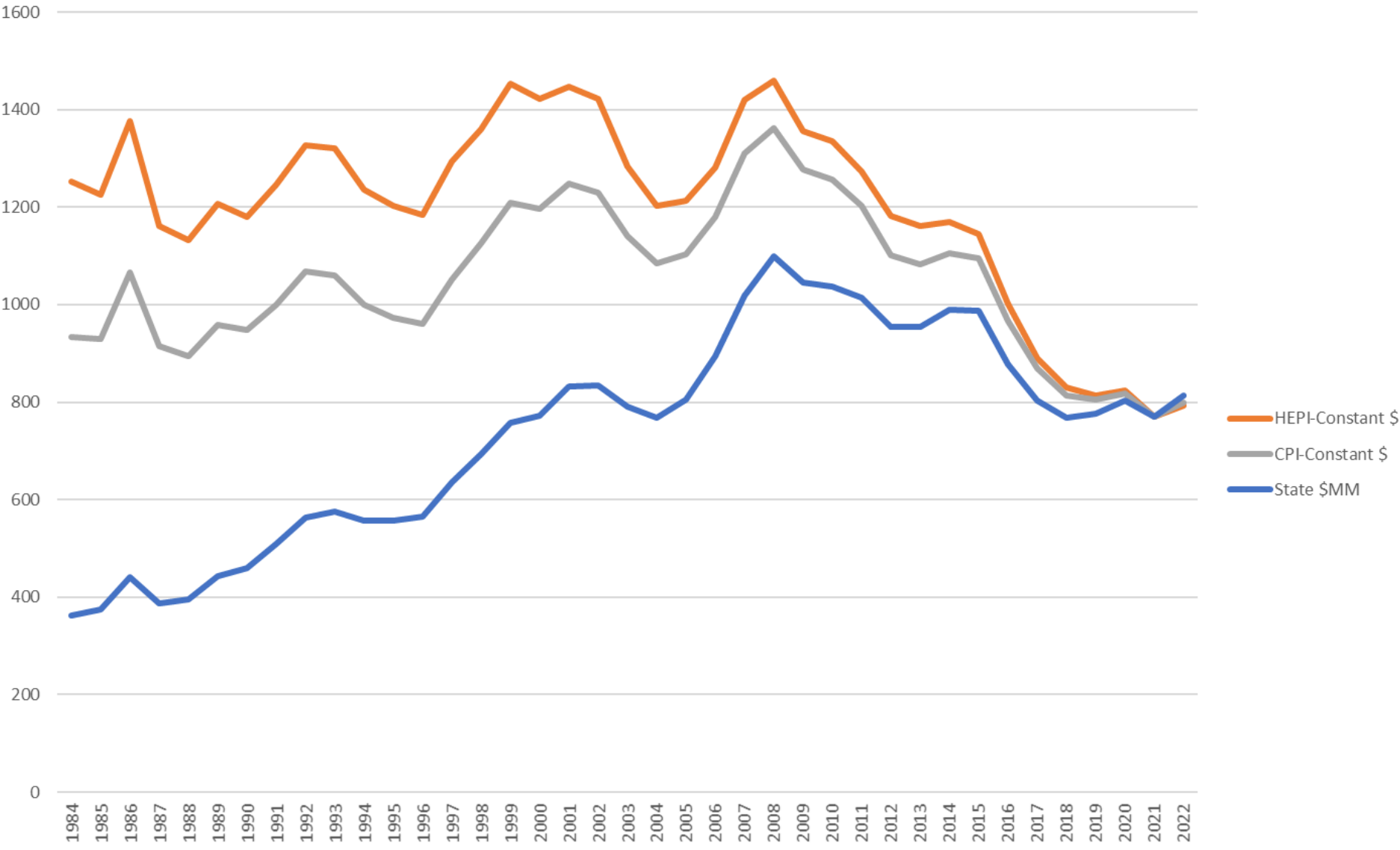
Mean Age-Earnings Profiles by Detailed Educational Attainment

Full-Time/Full-Year, \$2020 Inflation-Adjusted, 1994-2020 Full Period



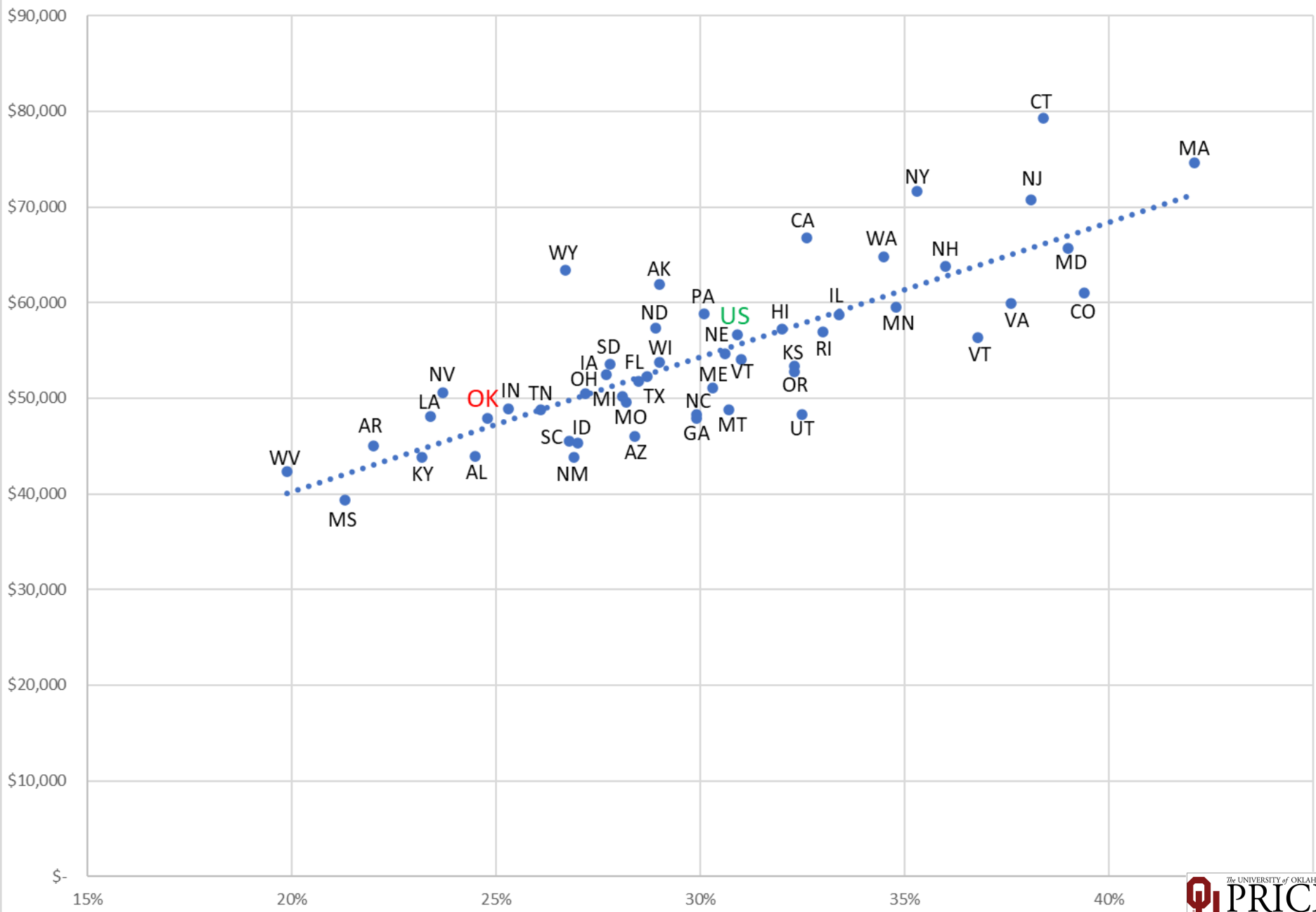
State of Oklahoma Appropriations for Higher Education

Inflation-adjusted, 2021=100, FY 1984-2022



Sources: [Oksenate.gov/publications/appropriations-reports](https://oksenate.gov/publications/appropriations-reports) and Commonfund Higher Education Price Index (HEPI), 2022, Table A.

State Per Capita Personal Income and Bachelor's or Higher Degrees Population Share: 2019





Key Takeaways

- ▶ Employment of college degreed personnel has advanced by more than the total gain in employment since 1992, almost 20 percent more.
- ▶ Total real earnings of college degreed personnel about equals the total gain in real earnings economy wide since 1992, 97.8% of the total gain.
- ▶ Unemployment rates and other measures of labor force utilization are considerably more favorable to the highly educated.
- ▶ Age-earnings profiles show considerable advance among the college educated in formative career-establishing years, in sharp contrast to lower educational attainment categories.
- ▶ State support of higher education has withered, falling in real terms by about one-third.
- ▶ In consequence, Oklahoma is among a cadre of low performing states with low rates of college attainment in their adult populations.

Thank
you