



### CHILD DEVELOPMENT ASSOCIATE

Awarded by the Council for Professional Recognition, the CDA is the most recognized child care credential in the United States and considered to be a key credential in the early childhood education profession. Visit [www.cdacouncil.org](http://www.cdacouncil.org) for more information.

### CERTIFIED CHILD CARE PROFESSIONAL

Awarded by the National Early Childhood Program Accreditation (NECPA), the CCP is a nationally recognized credential awarded to professionals exhibiting standards of excellence in child care and early childhood education. Visit [www.necpa.net/ccp](http://www.necpa.net/ccp) for more information.

Pass the CDA/CCP Assessment and Earn Your National Credential!

Apply for the CDA/CCP Assessment Scholarship

Successfully Complete Units 1-10 and pass the End of Instruction (EOI) Exam

Enroll in Pathway

Apply for the Scholars Program Technology Center (Pathway) Tuition Scholarship

For assistance, please contact:

**Jennifer Bachhofer**

**Scholarship Administrator**

**Email: [jbachhofer@osrhe.edu](mailto:jbachhofer@osrhe.edu)**

**Phone: 405.225.9133**

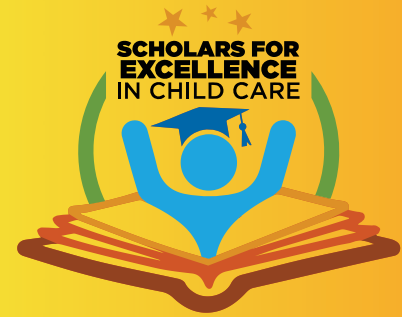


For more information about the Scholars Program, scan the QR Code or visit [okhighered.org/scholars](http://okhighered.org/scholars).



# Pathway To Your National Credential

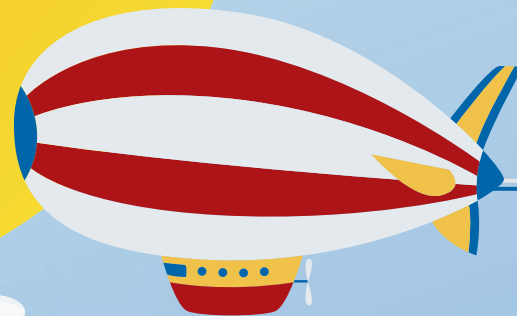
## Scholarship Opportunities for Child Care Professionals



Oklahoma State Regents for Higher Education



# Take Flight with us!



## PATHWAY TO YOUR NATIONAL CREDENTIAL

### SCHOLARSHIP BENEFITS

The Technology Center (Pathway) Tuition Scholarship pays up to 90% of tuition and 100% of curriculum materials for the CDA or CCP credential. Additionally, Scholars will have increased knowledge and skills in child development and the opportunity for monetary reward and recognition of their educational accomplishments.

### ABOUT THE SCHOLARS PROGRAM

The Scholars Program provides a professional development pathway for Oklahoma child care providers. Students participating in the Early Education: Pathway to Your National Credential program may be eligible for the Technology Center (Pathway) Tuition Scholarship. Scholarship staff are available to provide technical assistance with applications and admission, enrollment, financial aid, and academic and career advisement.



### SCHOLARSHIP ELIGIBILITY

To qualify for the Pathway scholarship, you must:

- Be employed in a licensed child care facility participating in the state QRIS with a rating of one-star or higher, working at least 30 hours per week directly with children.
- Enroll in the Early Education: Pathway to Your National Credential program and pass the End of Instruction (EOI) exam.



You can begin by submitting an application for the Technology Center (Pathway) Tuition Scholarship online via Scholars Connect, our new scholarship portal. Once approved for the scholarship you can begin training by enrolling at any participating career technology center in Oklahoma. The Pathway program provides 150 clock hours of comprehensive training and prepares child care providers for either the CDA or CCP national credential.

**Scholars Connect makes it  
easy to apply online!  
Visit [scholars.okhighered.org](https://scholars.okhighered.org)  
or scan the QR code below.**



*Elevate your career in child care today!*

